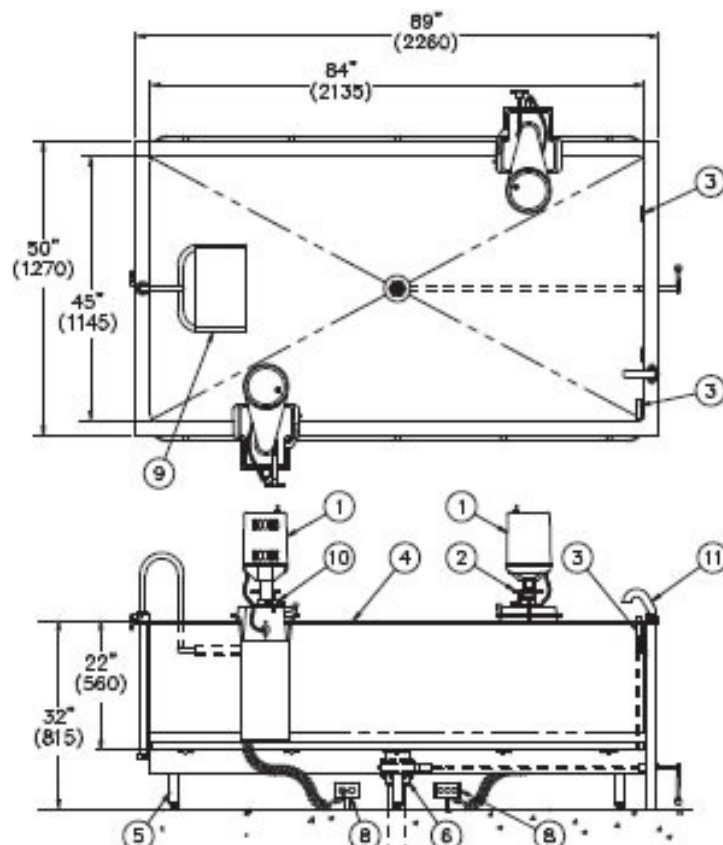
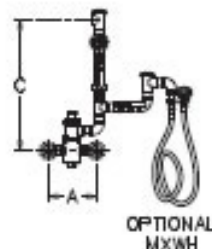
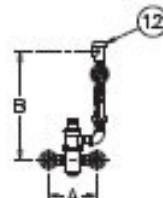


Note: Electrical requirements are 8 Amps / 115 Volts/ 60Hz/ 3 Pole GFI Receptacle.



All dimension figures in parentheses are in millimeters.

VALVE	INLETS	OUTLET	DIM A	DIM B	DIM C
MXT3 (45 GPM)	3/4" NPT	1" NPT	10" (255)	17-3/4" (450)	22-1/4" (565)
MXT4 (80 GPM)	1" NPT	1-1/4" NPT	11" (280)	20-1/2" (520)	24-3/4" (630)
MXT5 (125 GPM)	1-1/2" NPT	1-1/2" NPT	12-3/4" (325)	21" (535)	25-1/2" (645)



STATIONARY F-300-S IMMERSION TANK

NOTES:

- 1/2 hp Jet Pump Motors (2).
- Variable Pressure Control.
- Thermometer.
- Stainless Steel Tank.
- Adjustable Supporting Steel Legs.
- 3" Drain Valve Assembly.
- Overflow Assemblies (2).
- GFI Receptacles (2) by Others.
- Adjustable Head Rest Assembly.
- Turbine Raising & Lowering Device.
- Filler Spout w/ 1-1/2" O.D. Tube Assembly.
- Optional Mixing Valve Shown for Reference Only.