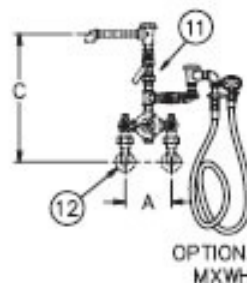


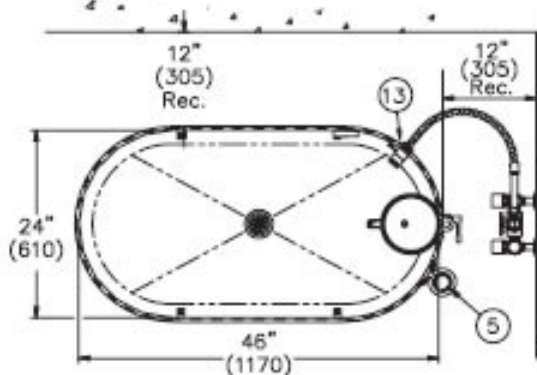
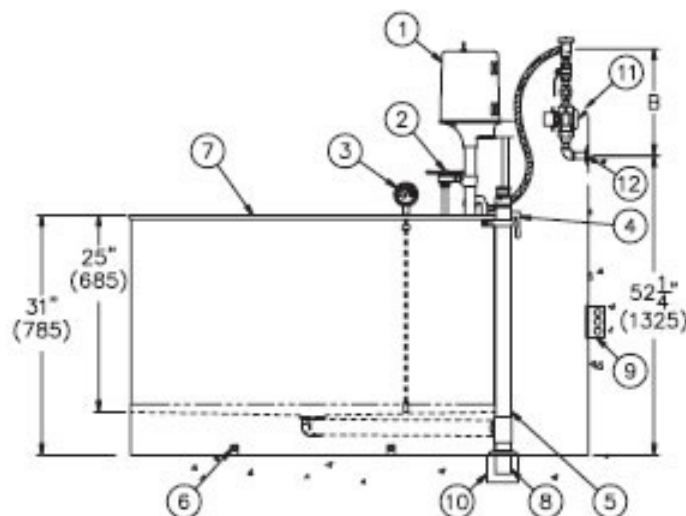
Note: Electrical requirements are 8 Amps / 115 Volts/ 60Hz/ 3 Pole GFI Receptacle.



VALVE	INLETS	OUTLET	DIM A	DIM B	DIM C
MXT1 (15 GPM)	1/2" NPT	1/2" NPT	8-1/2" (215)	13-3/4" (350)	18" (455)
MXT2 (25 GPM)	3/4" NPT	3/4" NPT	9-1/2" (240)	13-1/2" (345)	17" (430)



All dimension figures
in parentheses are
in millimeters.



STATIONARY S-90-S SERIES WHIRLPOOL

NOTES:

- 1/2 hp Jet Pump Motor.
- Variable Pressure Control.
- Thermometer.
- Turbine Raising & Lowering Device.
- Combination Drain & Overflow Assembly.
- "L" Brackets —Four Each.
- Stainless Steel Tank.
- 2" O.D. x 5" Tail Piece.
- 3 Pole GFI Receptacle by Others.
- Floor Drain by Others.
- Optional Thermostatic Mixing Valve with Vacuum Breaker.
- H & C Water Inlets by Others.
- Filler Spout.