

Traditional Crowned Hospital Overbed Light

Features

The fixture contains 2 ballasts and is available with or without a 4-position pull switch for direct and indirect lighting requirements. A night light is included with the fixture. The

Crown Molding frame is made of real wood and available in a variety of colors. There is a frosted white bottom diffuser and clear acrylic top panel for indirect lighting.

Construction

The housing is die formed from 22-gauge steel and is provided with standard mounting holes and wiring access.

Finish

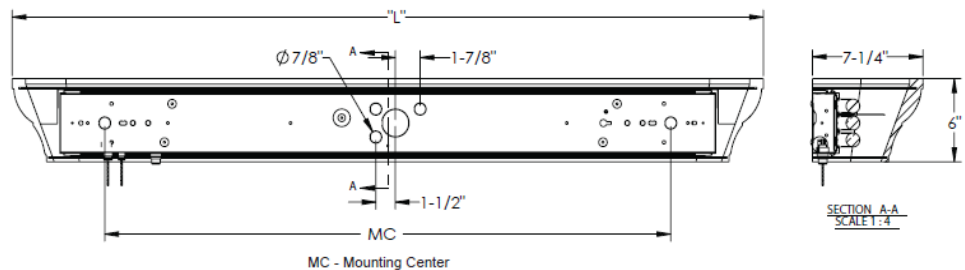
The frame is constructed in real wood and is available unfinished or in the following painted finishes; Ivory, Taupe and White.

Diffuser

The top diffuser is made from .10" clear acrylic sheet and the bottom diffuser is frosted white .10" thick sheet.

Electrical (Florescent)

This unit is wired with two UL listed electronic high power factor instant start ballasts for one up, two down T8 lamps at 120V- 50/60 Hz AC operation. Four position, three circuit pull switch (on up, on down, on both, all off) are standard and located toward the right end. LED nightlight and on/off pull switch is included.



21830 Kingsland Blvd-Suite 101A Katy TX 77450
P 713.706.4480 F 713.706.4161
www.msec.co

Lamping

For use with 3/25 or 3/32 Watt T8 linear fluorescent lamps; supplied by others.

Electrical (LED)

The unit is wired with two UL recognized LED Drivers. The shorter length fixtures produce 1350 source lumens upward, and 2700 down, while the longer fixtures provide 1800 source lumens upward and 3600 down. Four position pull switch (on up, on down, on both, all off) are standard and located near the right side of the fixture. LED nightlight with on/off control pull-switch is included.

Lamping

Fixture includes LED modules producing a total of 4050 or 5400 source lumens in 3000K CCT. Rated for 50,000 hours

Certification

cULus listed for damp locations.

Options

120-277V universal voltage available without switch and nightlight.

FLORESCENT

Ivory	Taupe	White	Qty	Lamp	H	L	D
8EIP523BDHAFX	8ETT523BDHAFX	8EHW523BDHAFX	3	F25T8	6"	43"	7-1/4"
8EIP233BDHAFX	8ETT233BDHAFX	8EHW233BDHAFX	3	F32T8	6"	55"	7-1/4"

LED

Ivory	Taupe	White	LED	Source Lumens	H	L	D
IPNE03L000434BDHAFX	TTNE03L000434BDHAFX	HWNE03L000434BDHAFX	36W	1350 up/2700 down	6"	43"	7-1/4"
IPNE03L004555BDHAFX	TTNE03L004555BDHAFX	HWNE03L004555BDHAFX	45W	1800 up/3600 down	6"	55"	7-1/4"



21830 Kingsland Blvd-Suite 101A Katy TX 77450
P 713.706.4480 F 713.706.4161
www.msec.co